

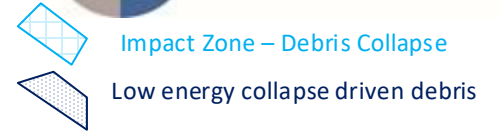
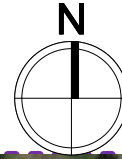
Exclusion Zone – Bunker Bay Demolition (SW) – 250m Rev 1.4



Key roads, structures and properties identified for consideration
 – Note collapse in SW direction:

1. Caravan park site boundary on 250m (SW)
 (entrance gate access (300m) and internal roads not affected)
2. 132kv Sub – 285m (NE)
3. Pylon – Closest 75m (East and west)

4. Site Offices – 290m (NE)
5. Buildwas Road (nearest point / incl site entrance) – 580m (NE)
6. Oil filled Cable – 250m (East)
7. 400kv Sub – 40m (NW)
8. Chimney – 70m (SW)



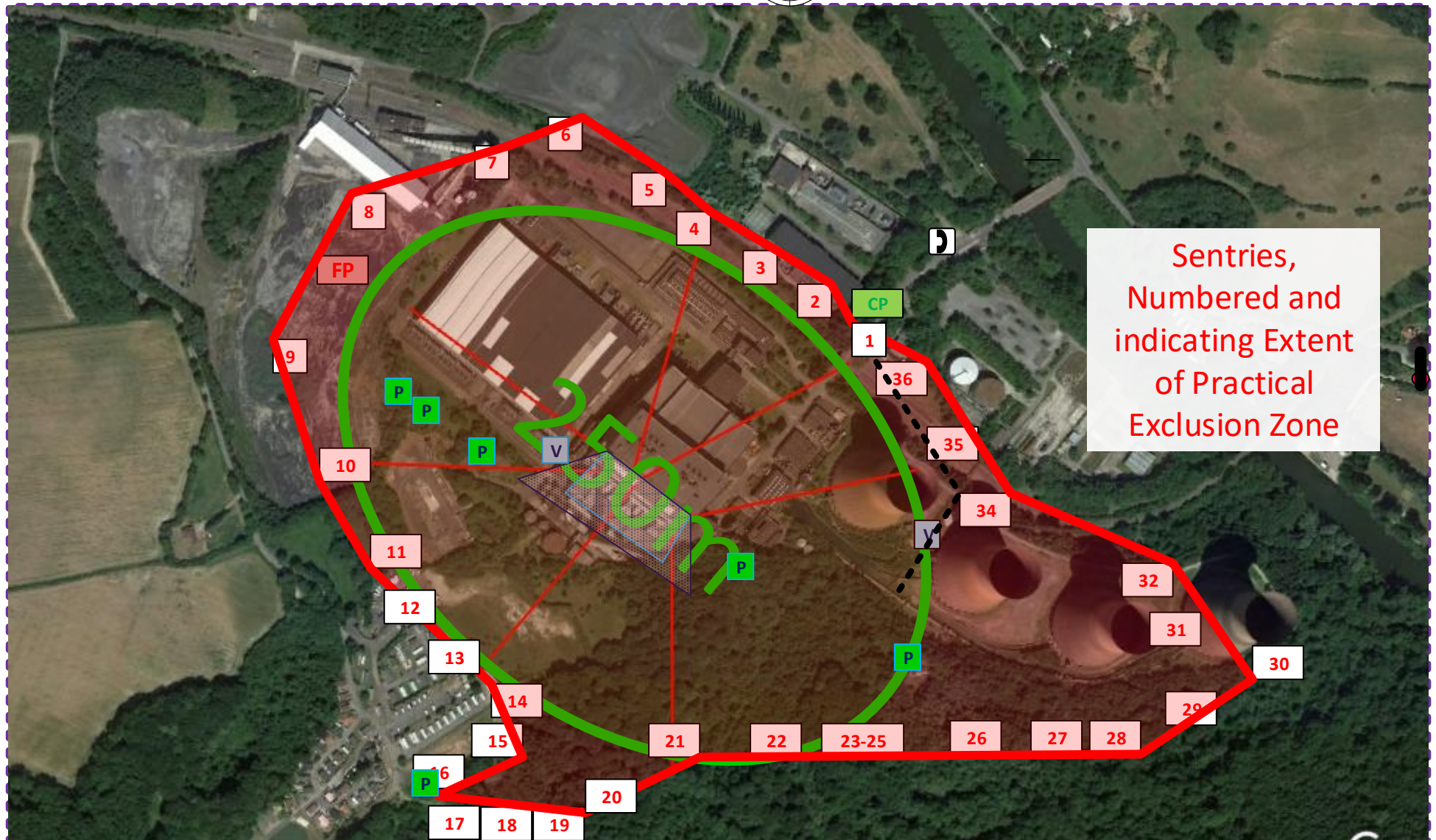
V Vibration Monitors inside of exclusion zone

CP

Control Point – At Gatehouse

FP

Firing Point- Edge of exclusion zone beyond 400kv Sub



Sentries,
 Numbered and
 indicating Extent
 of Practical
 Exclusion Zone